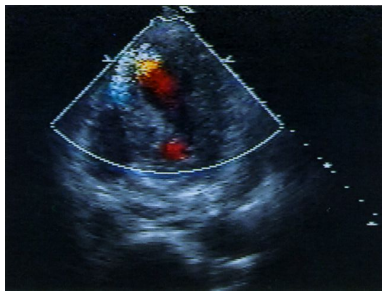
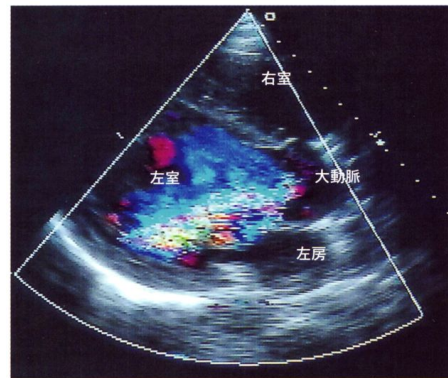


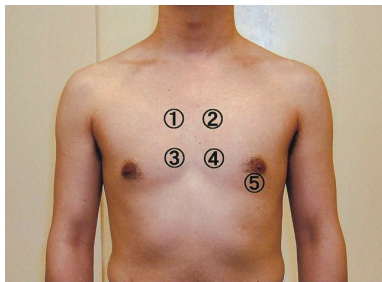
※矢印が黄色いだけな画像や色付きの心電図など、特にカラーである意味のない画像は掲載していません。



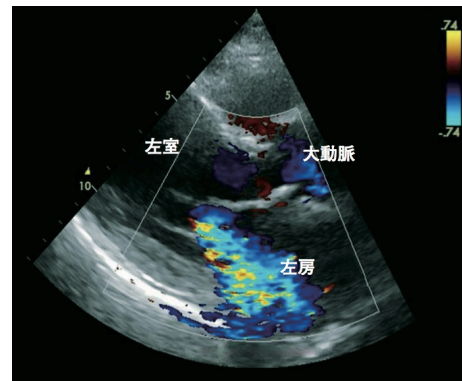
(p.86C)



(p.112B)



(p.104 上)

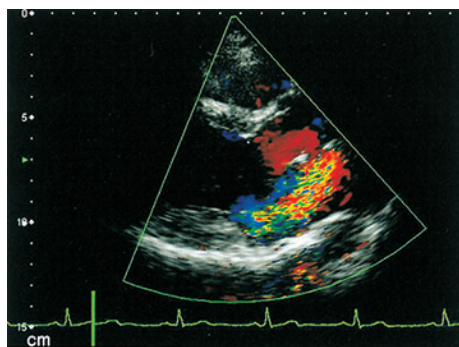


収縮期

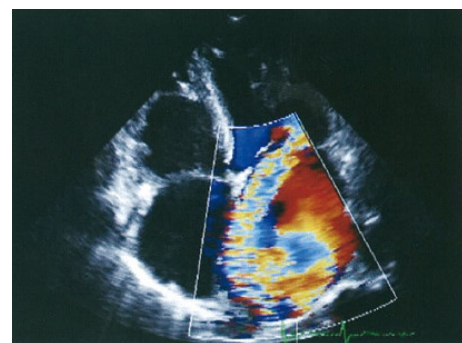
(p.114B)



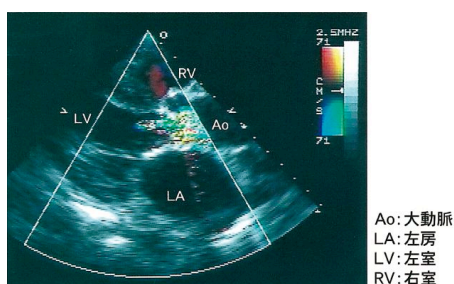
(p.104 下)



(p.108B)



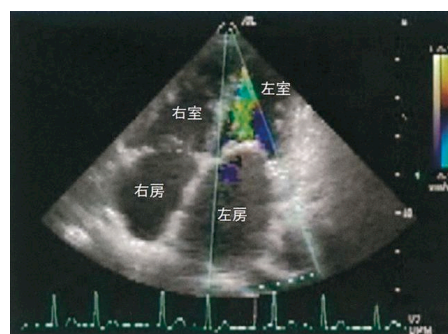
(p.115B)



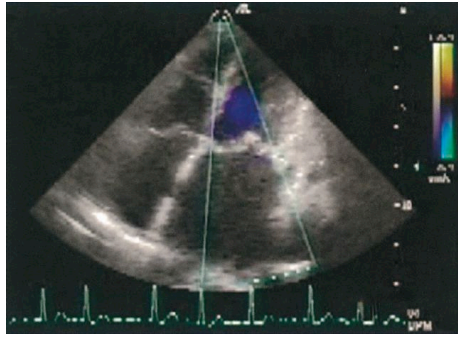
収縮期

Ao: 大動脈
LA: 左房
LV: 左室
RV: 右室

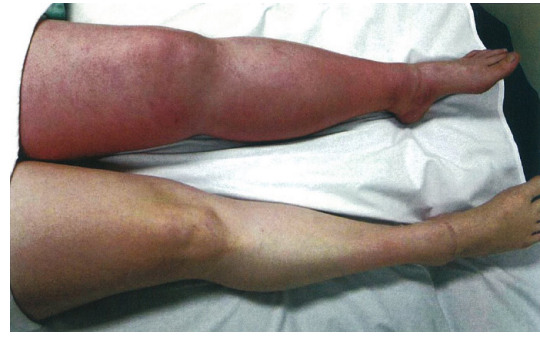
(p.110B)



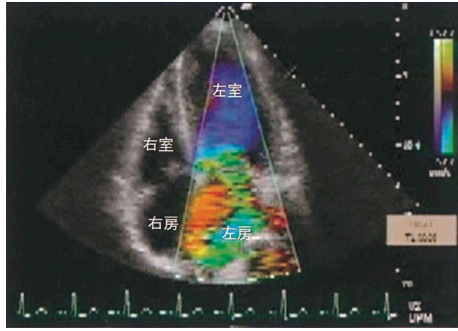
(p.116A)



(p.116B)



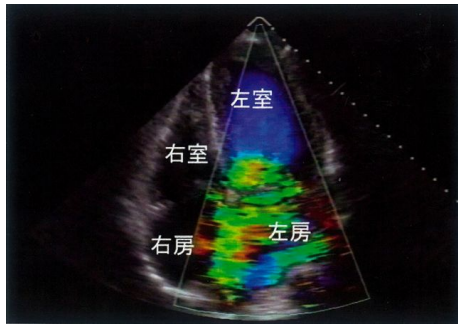
(p.158)



(p.122B)



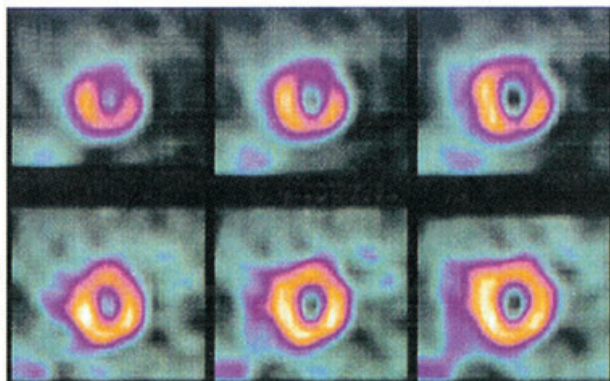
(p.169)



(p.134 下 B)

左室短軸断層像

運動負荷直後



4 時間後
(安静時)

(p.94)